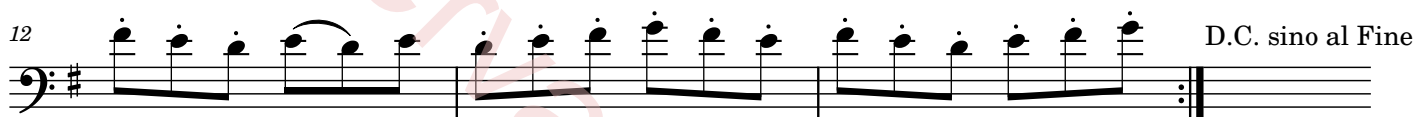


Irish Air with Variation for the Double Bass

Domenico Dragonetti

I-Vc
CBE c. 40r



2

Andante

29

34

p

37

p cresc.

42

Allegretto

45

p

48

51

[Fine]

f p

55

f p

59

f

cresc. f p

63

f p *cresc. - - - - f p*

Detailed description: This system contains measures 63 through 66. The bass clef is in the key of D major. Measure 63 starts with a half note D2. The melody consists of eighth notes: D4, E4, F#4, G4, A4, B4, C5, B4, A4, G4, F#4, E4, D4. Measure 64 has a half note D2 and a melody of eighth notes: D4, E4, F#4, G4, A4, B4, C5, B4, A4, G4, F#4, E4, D4. Measure 65 has a half note D2 and a melody of eighth notes: D4, E4, F#4, G4, A4, B4, C5, B4, A4, G4, F#4, E4, D4. Measure 66 has a half note D2 and a melody of eighth notes: D4, E4, F#4, G4, A4, B4, C5, B4, A4, G4, F#4, E4, D4. Dynamics are *f p* at the start and *cresc. - - - - f p* in the middle.

67

3

Detailed description: This system contains measures 67 through 69. Measure 67 has a half note D2 and a melody of eighth notes: D4, E4, F#4, G4, A4, B4, C5, B4, A4, G4, F#4, E4, D4. Measure 68 has a half note D2 and a melody of eighth notes: D4, E4, F#4, G4, A4, B4, C5, B4, A4, G4, F#4, E4, D4. Measure 69 has a half note D2 and a melody of eighth notes: D4, E4, F#4, G4, A4, B4, C5, B4, A4, G4, F#4, E4, D4. A triplet of eighth notes (D4, E4, F#4) is marked with a '3' below it.

70

3 3

Detailed description: This system contains measures 70 and 71. Measure 70 has a half note D2 and a melody of eighth notes: D4, E4, F#4, G4, A4, B4, C5, B4, A4, G4, F#4, E4, D4. Measure 71 has a half note D2 and a melody of eighth notes: D4, E4, F#4, G4, A4, B4, C5, B4, A4, G4, F#4, E4, D4. Two triplets of eighth notes (D4, E4, F#4) are marked with '3' below them.

72

D. C. sino al Fine

Detailed description: This system contains measures 72 and 73. Measure 72 has a half note D2 and a melody of eighth notes: D4, E4, F#4, G4, A4, B4, C5, B4, A4, G4, F#4, E4, D4. Measure 73 has a half note D2 and a melody of eighth notes: D4, E4, F#4, G4, A4, B4, C5, B4, A4, G4, F#4, E4, D4. The system ends with a double bar line and the instruction 'D. C. sino al Fine'.

74

Detailed description: This system contains measures 74 through 76. Measure 74 has a half note D2 and a melody of eighth notes: D4, E4, F#4, G4, A4, B4, C5, B4, A4, G4, F#4, E4, D4. Measure 75 has a half note D2 and a melody of eighth notes: D4, E4, F#4, G4, A4, B4, C5, B4, A4, G4, F#4, E4, D4. Measure 76 has a half note D2 and a melody of eighth notes: D4, E4, F#4, G4, A4, B4, C5, B4, A4, G4, F#4, E4, D4.

77

Detailed description: This system contains measures 77 through 79. Measure 77 has a half note D2 and a melody of eighth notes: D4, E4, F#4, G4, A4, B4, C5, B4, A4, G4, F#4, E4, D4. Measure 78 has a half note D2 and a melody of eighth notes: D4, E4, F#4, G4, A4, B4, C5, B4, A4, G4, F#4, E4, D4. Measure 79 has a half note D2 and a melody of eighth notes: D4, E4, F#4, G4, A4, B4, C5, B4, A4, G4, F#4, E4, D4.

80

Detailed description: This system contains measures 80 and 81. Measure 80 has a half note D2 and a melody of eighth notes: D4, E4, F#4, G4, A4, B4, C5, B4, A4, G4, F#4, E4, D4. Measure 81 has a half note D2 and a melody of eighth notes: D4, E4, F#4, G4, A4, B4, C5, B4, A4, G4, F#4, E4, D4. The system ends with a double bar line.